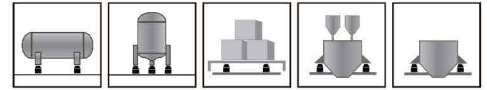
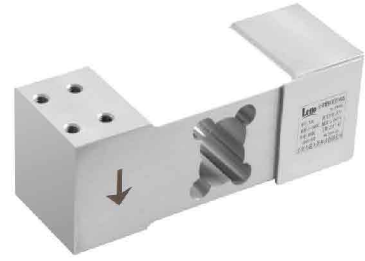
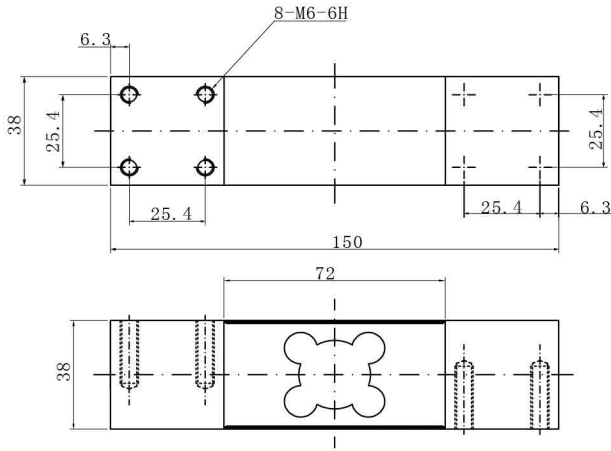


TL04 平行梁称重传感器

Dimensions 尺寸

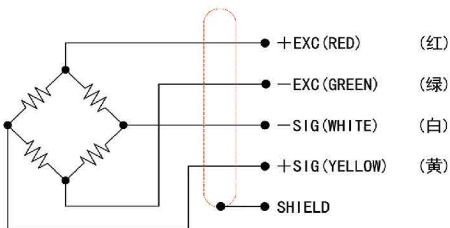


Features 主要特点

- Single point load cell
- Senior alloy steel
- High accuracy, High stability
- Easy to install
- Protected against corrosion by nickelplated treatment
- Suitable for belt scales, package systems, small hopper scales, bench scales, etc.
- 单点式
- 优质合金钢材质
- 高精度，高稳定性
- 安装简便、快速
- 表层镀镍防腐处理
- 适用于皮带秤、包装秤、小型料斗秤、台秤等

Schematic 接线方式

- | | | | |
|----------|---------|-----|-----|
| ①RED: | + input | 红色: | +激励 |
| ②GREEN: | - input | 绿色: | -激励 |
| ③WHITE: | -output | 白色: | -信号 |
| ④YELLOW: | +output | 黄色: | +信号 |



Specification 技术参数

型号	Model	TL04
量程	Capacity	50~500Kg(可选)
输出灵敏度	Rated Output	2.0±0.005mV/V
零点平衡	Zero Balance	±1%F.S
蠕变	Creep after 30 minutes	0.01%F.S
非线性	Nonlinearity	0.01%F.S
滞后	Hysteresis	0.01%F.S
重复性	Repeatability	0.01%F.S
灵敏度温漂	Temperature effect on output	≤0.002%F.S/°C
零点温漂	Temperature effect on zero	≤0.002%F.S/°C
工作温度范围	Safe Temperature Range	-10°C ~ +70°C
温度补偿范围	Temperature Compensate	-10°C ~ +40°C
安全载荷	Safe Overload	150%F.S
输入阻抗	Input Impedance	405Ω ± 20 Ω
输出阻抗	Output Impedance	350Ω ± 3 Ω
绝缘阻抗	Insulation Resistance	≥5000 MΩ (50VDC)
推荐激励电压	Rated Excitation	5~12VDC
防护等级	Protection grade	IP66
导线颜色	Cable Color code	红Red(+E) 绿Green(-E) 黄Yellow(+S) 白White(-S)

Load Direction 受力方式

